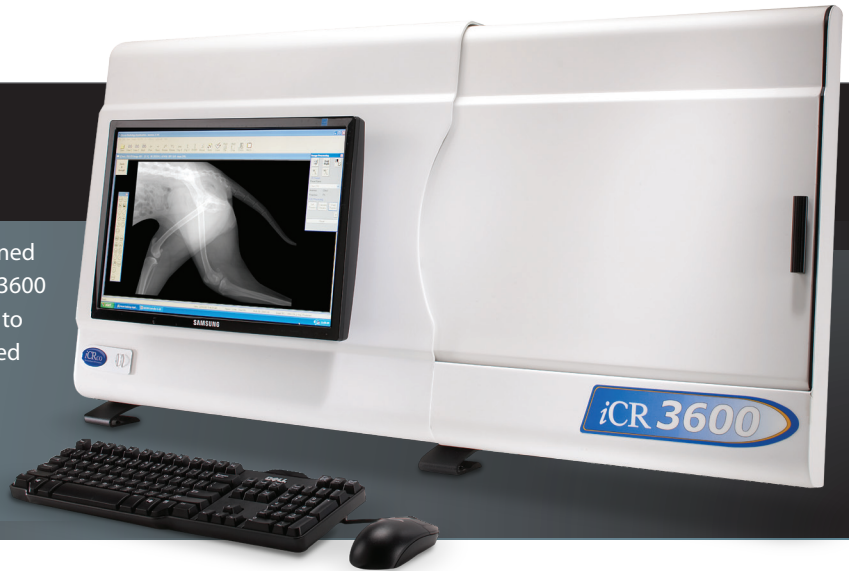




The Future of Digital Radiography for Veterinarians

iCR3600

The iCR3600 for Vets is a computed radiography machine designed to meet all the needs of Veterinarian Professionals. With the iCR3600 you can convert to digital with peace of mind and say goodbye to film, chemicals, and waiting. Once the digital images are acquired with the iCR3600 you can further manipulate the images using Xscan32, our superior image acquisition software. The ability to enhance the digital images with various tools improves care and ensures quick turnaround.



TOTAL PEACE OF MIND

iCRco has experienced and knowledgeable technical support in-house. When you call for help, you are calling iCRco's headquarters directly and we are here to help.

SOLUTIONS FOR ALL VETERINARY IMAGING

The iCR3600 fits right into any workflow. This plug-n-play system can be placed in the smallest exam room or be used as a mobile unit in the field. All imaging tools, including large and small animal, exotics, and equine, are available with the iCR3600.

IMAGE QUALITY

- 16 bit image acquisition: 65,536 shades of greyscale.
- True Flat Scan Path™ – Artifact free imaging.
- ICE 2 processing- Image clarity enhancement

VETERINARIAN SOFTWARE FEATURES

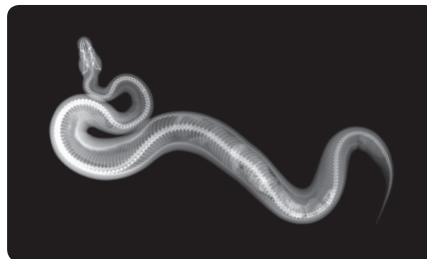
- Image acquisition, review and evaluation.
- Further manipulation tools
- Send and receive images in seconds
- Intuitive, easy to use
- Eliminates re-takes
- Automatic window levelling
- Soft, standard or sharp processing
- Measurement and annotation tools
- CD/DVD Writer

ICR3600 - A TURN-KEY SYSTEM FROM A SINGLE SOURCE

- Store up to thousands of images
- Acquisition Software
- Viewing Stations & Viewing Software
- On-Site Training
- Continuing Support
- Integration with VPMS

REDUCED LABOR & MATERIAL EXPENSE

- Rapid distribution of instantaneous images.
- Automatic filing, reporting, retrieval and comparisons.
- No more dark rooms, couriers and chemicals costs



I SEE the FUTURE of VETERINARY IMAGING

SYSTEM SPECIFICATIONS

SPATIAL RESOLUTION

- 5 lp/mm

GRAYSACLE RESOLUTION

- 16 bits/pixel source file

CASSETTES AVAILABLE

- 14" x 17" (35 cm x 43 cm)
- 10" x 12" (24 cm x 30 cm)
- 8" x 10" (18 cm x 24 cm)

ACQUISITION TIME

- 25 seconds to preview
- 42 seconds image cycle

DIAGNOSTIC WORKSTATION

- Dell OptiPlex, Intel Core2 Duo processor, 2GB RAM, CD/DVD Burner, 10/100 Ethernet, USB 2.0

MONITOR

- 19" viewable area, high resolution, high contrast

COMPATIBILITY

- Fully DICOM compliant

COMMUNICATIONS

- Configurable to any LAN or IP address.

STORAGE

- 250 GB Internal plus 250 GB External (Back-Up) high-capacity hard drives.

SOFTWARE INTERFACE

- Interface with VPMS.

DETAILED SOFTWARE FEATURES

- Zoom in, zoom out, magnify area, invert, rotate and resize.
- Adjust brightness, contrast, gamma and window level.
- Transfer images via email, save to CD/DVD, or send to PACS
- Revert to original, annotate image, crop image
- Precise measurement & angle tools.
- Print image, smart box, ICE-2 processing